

# Report on the main results of the surveillance under article 11 for annex II, IV and V species (Annex B)

0.1 Member State	HU
0.2.1 Species code	2120
0.2.2 Species name	<b>Thlaspi jankae</b>
0.2.3 Alternative species scientific name	N/A
0.2.4 Common name	jankae-tarsóka

## 1. National Level

### 1.1 Maps

1.1.1 Distribution Map	Yes
1.1.1a Sensitive species	No
1.1.2 Method used - map	Complete survey/Complete survey or a statistically robust estimate (3)
1.1.3 Year or period	2007-2012
1.1.4 Additional map	No
1.1.5 Range map	Yes

## 2. Biogeographical Or Marine Level

### 2.1 Biogeographical Region

### 2.2 Published sources

#### Pannonian (PAN)

Schmotzer A. (2009): Bükkaljai temetőkertek, mint dombvidéki maradvány-élőhelyek előzetes botanikai vizsgálata. – MBT Növénytani Szakosztályülés 1437. szakülés, 2009. december 7, – Bot. Közlem. 97(1–2): 171–180, 2010. ([http://www.mbt-bk.mtesz.hu/2010-97/15\\_Novszaku.pdf](http://www.mbt-bk.mtesz.hu/2010-97/15_Novszaku.pdf))

Schmotzer A. (2009): A Janka-tarsóka nyomában a bükkaljai temetőkben. – Zöld Horizont 2: 5 p.

Farkas J. - Gulyás G. - Lukács B. (2007): Adatok a Hernád-völgy flórájának ismeretéhez. - Kitaibelia 12(1): 97-101.

Schmotzer A. (2008): A fűlevelű aranyvessző [*Solidago graminifolia* (L.) SALISB.] előfordulása Magyarországon. - Flora Pannonica 6: 59-77.

Takács A. – Schmotzer A. – Sulyok J. (2012): Florisztikai adatok a Sajó-Hernád-sík területéről. – Kitaibelia 17 (2) – in press  
A Nemzeti Biodiverzitás-monitorozó Rendszer keretében 2007-2012 között végzett felmérések kutatási jelentései

### 2.3 Range

2.3.1 Surface area - Range (km <sup>2</sup> )	7468
2.3.2 Method - Range surface area	Complete survey/Complete survey or a statistically robust estimate (3)
2.3.3 Short-term trend period	2001-2012
2.3.4 Short-term trend direction	stable (0)
2.3.5 Short-term trend magnitude	min max
2.3.6 Long-term trend period	
2.3.7 Long-term trend direction	N/A
2.3.8 Long-term trend magnitude	min max
2.3.9 Favourable reference range	area (km <sup>2</sup> ) operator approximately equal to (≈) unknown No method

# Report on the main results of the surveillance under article 11 for annex II, IV and V species (Annex B)

2.3.10 Reason for change	Improved knowledge/more accurate dataUse of different method
--------------------------	--

## 2.4 Population

2.4.1 Population size (individuals or agreed exception)	Unit	number of individuals (i)		
	min	360000	max	520000
2.4.2 Population size (other than individuals)	Unit	N/A		
	min		max	
2.4.3 Additional information	Definition of locality			
	Conversion method			
	Problems			
2.4.4 Year or period	2007-2012			
2.4.5 Method – population size	Complete survey/Complete survey or a statistically robust estimate (3)			
2.4.6 Short-term trend period	2001-2012			
2.4.7 Short term trend direction	stable (0)			
2.4.8 Short-term trend magnitude	min		max	confidence interval
2.4.9 Short-term trend method	Complete survey/Complete survey or a statistically robust estimate (3)			
2.4.10 Long-term trend period				
2.4.11 Long term trend direction	N/A			
2.4.12 Long-term trend magnitude	min		max	confidence interval
2.4.13 Long-term trend method	N/A			
2.4.14 Favourable reference population	number			
	operator	approximately equal to (≈)		
	unknown	No		
	method			
2.4.15 Reason for change	Improved knowledge/more accurate data Use of different method			

## 2.5 Habitat for the Species

2.5.1 Surface area - Habitat (km <sup>2</sup> )	26
2.5.2 Year or period	2007-2012
2.5.3 Method used - habitat	Complete survey/Complete survey or a statistically robust estimate (3)
2.5.4 a) Quality of habitat	Moderate
2.5.4 b) Quality of habitat - method	Figyelembe vett tényezők: szukcessziós viszonyok, területhasználat, inváziós fertőzöttség
2.5.5 Short term trend period	2001-2012
2.5.6 Short term trend direction	stable (0)
2.5.7 Long-term trend period	
2.5.8 Long term trend direction	N/A
2.5.9 Area of suitable habitat (km <sup>2</sup> )	26
2.5.10 Reason for change	Improved knowledge/more accurate data Use of different method

## 2.6 Main Pressures

# Report on the main results of the surveillance under article 11 for annex II, IV and V species (Annex B)

Pressure	ranking	pollution qualifier(s)
abandonment of pastoral systems, lack of grazing (A04.03)	high importance (H)	N/A
discontinuous urbanisation (E01.02)	medium importance (M)	N/A
Biocenotic evolution, succession (K02)	medium importance (M)	N/A
invasive non-native species (I01)	medium importance (M)	N/A
Roads, paths and railroads (D01)	medium importance (M)	N/A
grassland removal for arable land (A02.03)	medium importance (M)	N/A
burning down (J01.01)	low importance (L)	N/A
forest planting on open ground (B01)	low importance (L)	N/A
Mines (C01.04)	low importance (L)	N/A
Discharges (E03)	low importance (L)	N/A

2.6.1 Method used – pressures based exclusively or to a larger extent on real data from sites/occurrences or other

## 2.7 Main Threats

Threat	ranking	pollution qualifier(s)
Biocenotic evolution, succession (K02)	high importance (H)	N/A
discontinuous urbanisation (E01.02)	medium importance (M)	N/A
invasive non-native species (I01)	medium importance (M)	N/A
Roads, paths and railroads (D01)	medium importance (M)	N/A
abandonment of pastoral systems, lack of grazing (A04.03)	medium importance (M)	N/A
burning down (J01.01)	low importance (L)	N/A
grassland removal for arable land (A02.03)	low importance (L)	N/A
forest planting on open ground (B01)	low importance (L)	N/A
Mines (C01.04)	low importance (L)	N/A
Discharges (E03)	low importance (L)	N/A

2.7.1 Method used – threats expert opinion (1)

## 2.8 Complementary Information

2.8.1 Justification of % thresholds for trends

2.8.2 Other relevant Information

2.8.3 Trans-boundary assessment

## 2.9 Conclusions (assessment of conservation status at end of reporting period)

2.9.1 Range assessment Favourable (FV)  
qualifiers N/A

2.9.2. Population assessment Favourable (FV)  
qualifiers N/A

2.9.3. Habitat assessment Favourable (FV)  
qualifiers N/A

2.9.4. Future prospects assessment Favourable (FV)  
qualifiers N/A

2.9.5 Overall assessment of Conservation Status Favourable (FV)

# Report on the main results of the surveillance under article 11 for annex II, IV and V species (Annex B)

2.9.5 Overall trend in Conservation Status

N/A

## 3. Natura 2000 coverage and conservation measures - Annex II species

### 3.1 Population

#### 3.1.1 Population Size

Unit number of individuals (i)  
min 130000 max 200000

#### 3.1.2 Method used

Complete survey/Complete survey or a statistically robust estimate (3)

#### 3.1.3 Trend of population size within

N/A

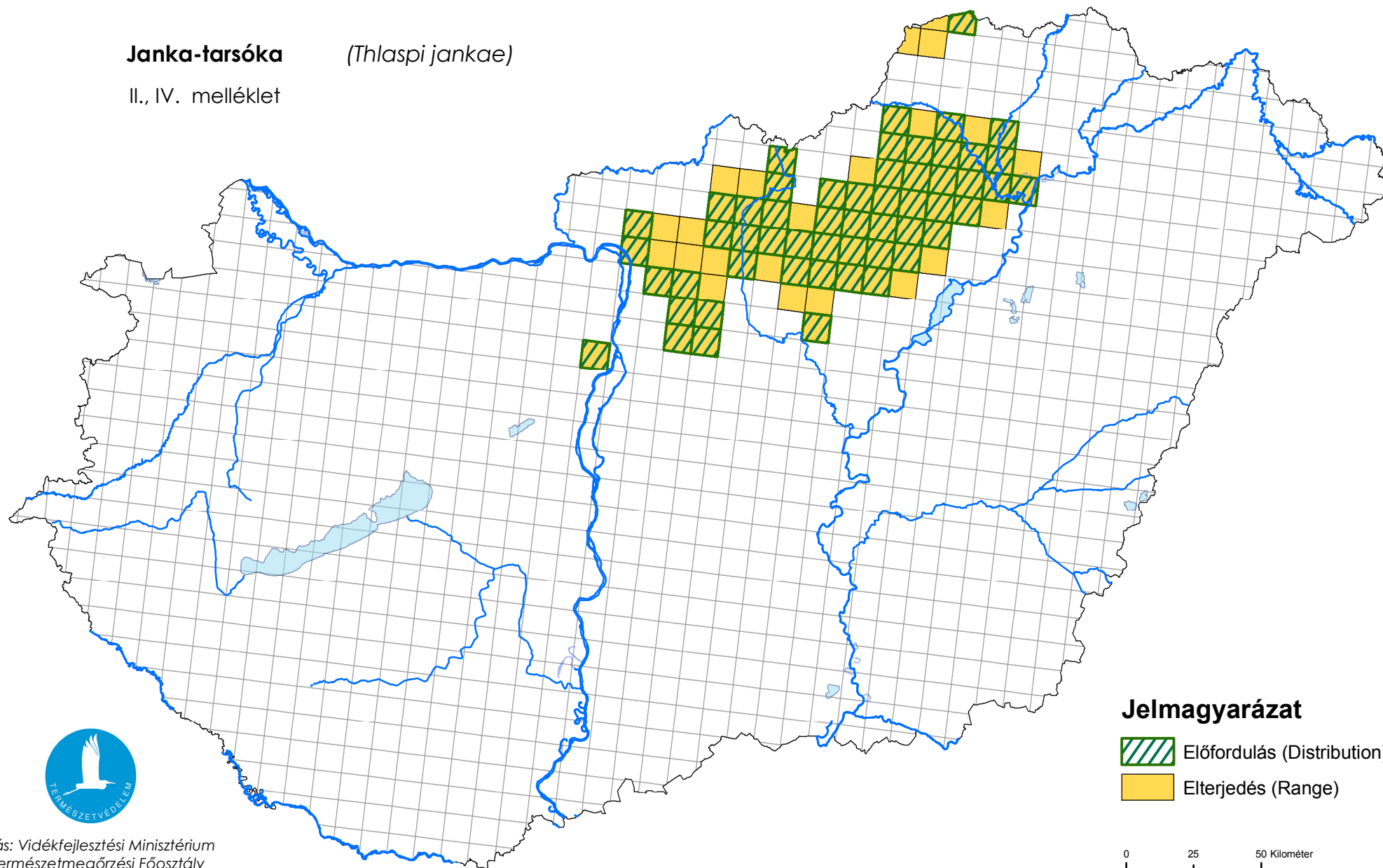
### 3.2 Conversation Measures

3.2.1 Measure	3.2.2 Type	3.2.3 Ranking	3.2.4 Location	3.2.5 Broad Evaluation
Other agriculture-related measures (2.0)	Administrative Recurrent	high importance (H)	Both	Maintain Enhance Unknown
Maintaining grasslands and other open habitats (2.1)	One-off	medium importance (M)	Inside	Maintain Enhance Long term
Legal protection of habitats and species (6.3)	Administrative One-off	low importance (L)	Inside	Maintain
Other species management measures (7.0)	Recurrent	medium importance (M)	Both	Long term

# Térképmelléklet az élőhelyvédelmi irányelv 17. cikke alapján készített országjelentéshez 2013.

**Janka-tarsóka** (*Thlaspi jankae*)

II., IV. melléklet



Forrás: Vidékfejlesztési Minisztérium  
Természetmegőrzési Főosztály